

A group of people, likely Inuit, are standing on a wooden sled on a snowy, icy landscape. They are wearing heavy winter clothing, including parkas and boots. The background shows a vast, flat, snow-covered area under a pale sky.

ᐱᑕᓐᓂᐅᐱᑲ  
Atanniuvik

# Governance Presentation

HFTCO  
March 21<sup>st</sup> 2024

# ACKNOWLEDGEMENTS

We gratefully acknowledge the work of the Atanniuvik Steering Committee for its leadership in planning and establishing Atanniuvik





# Context

1

2018

Nunavik organizations agreed to develop a plan for research governance in Nunavik

2

2020

Partnership agreement between Nunavik organizations signed which formed Steering Committee

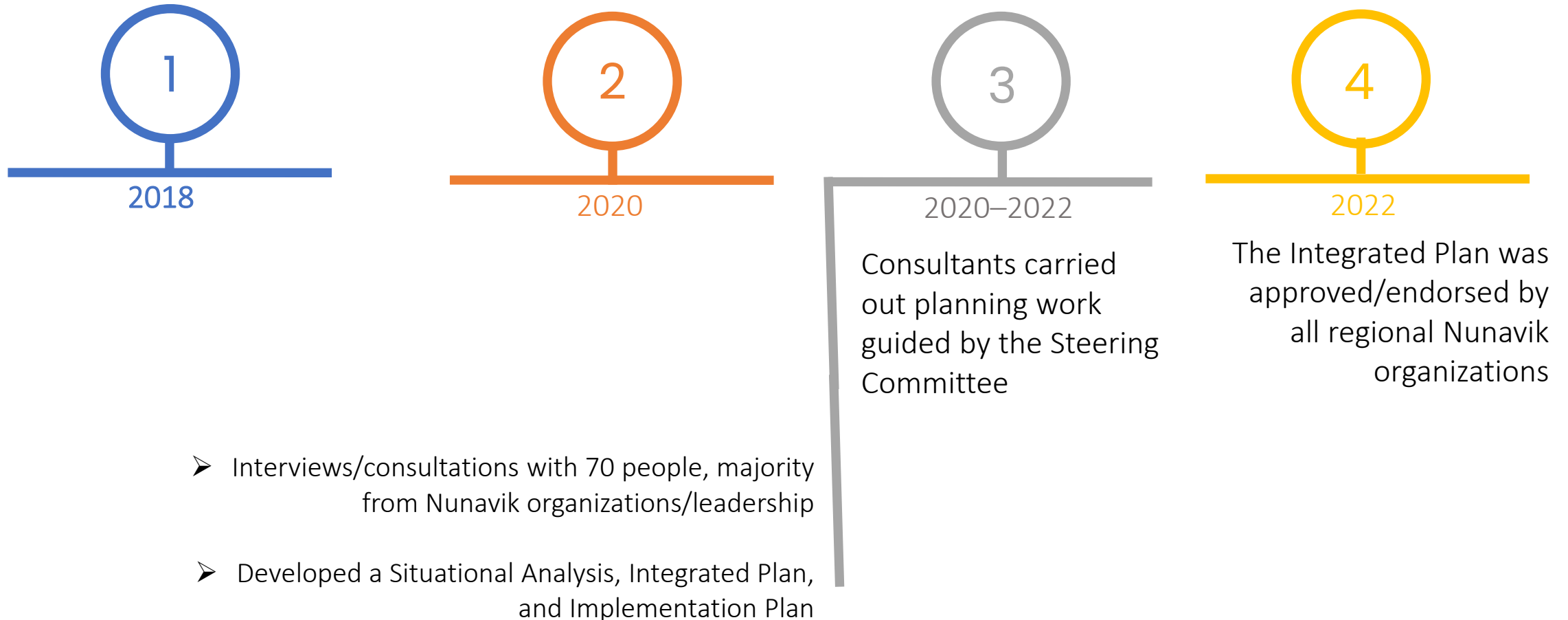
3

2020–2022

4

2022

# Context



# Phases

Phases	Timing	Details
Planning	<ul style="list-style-type: none"><li>• 2018 – early 2022</li></ul>	<ul style="list-style-type: none"><li>• Completed</li></ul>
Establishment	<ul style="list-style-type: none"><li>• Early 2022–early 2025</li></ul>	<ul style="list-style-type: none"><li>• Approval of Integrated Plan by organizations – Completed</li><li>• Legal creation of Atanniuvik</li><li>• Preparation for Operational Phase as described in Implementation Plan</li></ul>
Operational	<ul style="list-style-type: none"><li>• 2025 onwards</li></ul>	<ul style="list-style-type: none"><li>• Starts reviewing research proposals</li></ul>



# Establishment Phase update

What we are working on



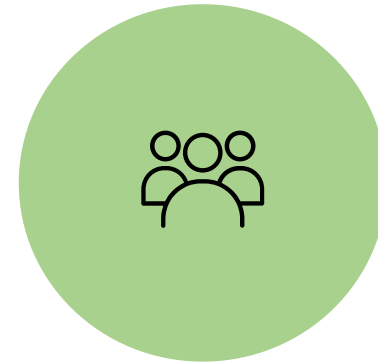
Funding



Research  
Management  
Software System



Nunavik Retrospective  
Research Project



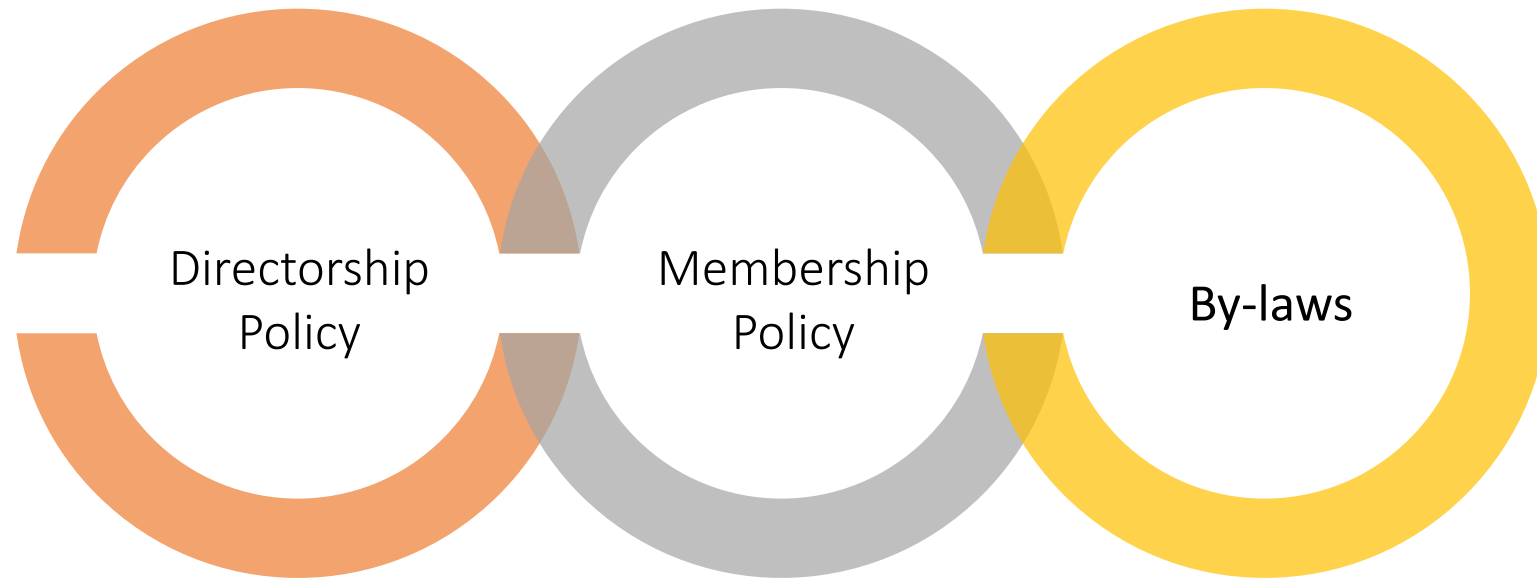
Staffing



Incorporation

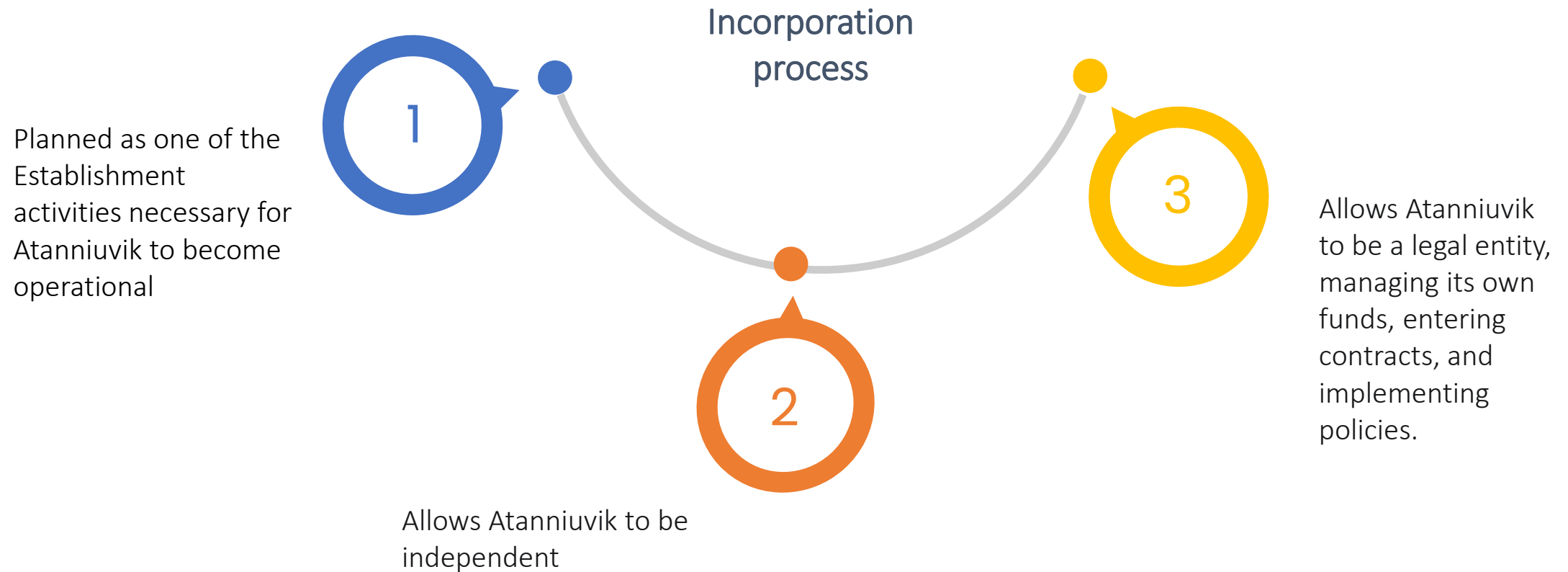


# Atanniuvik Governance Package





# The importance of incorporation



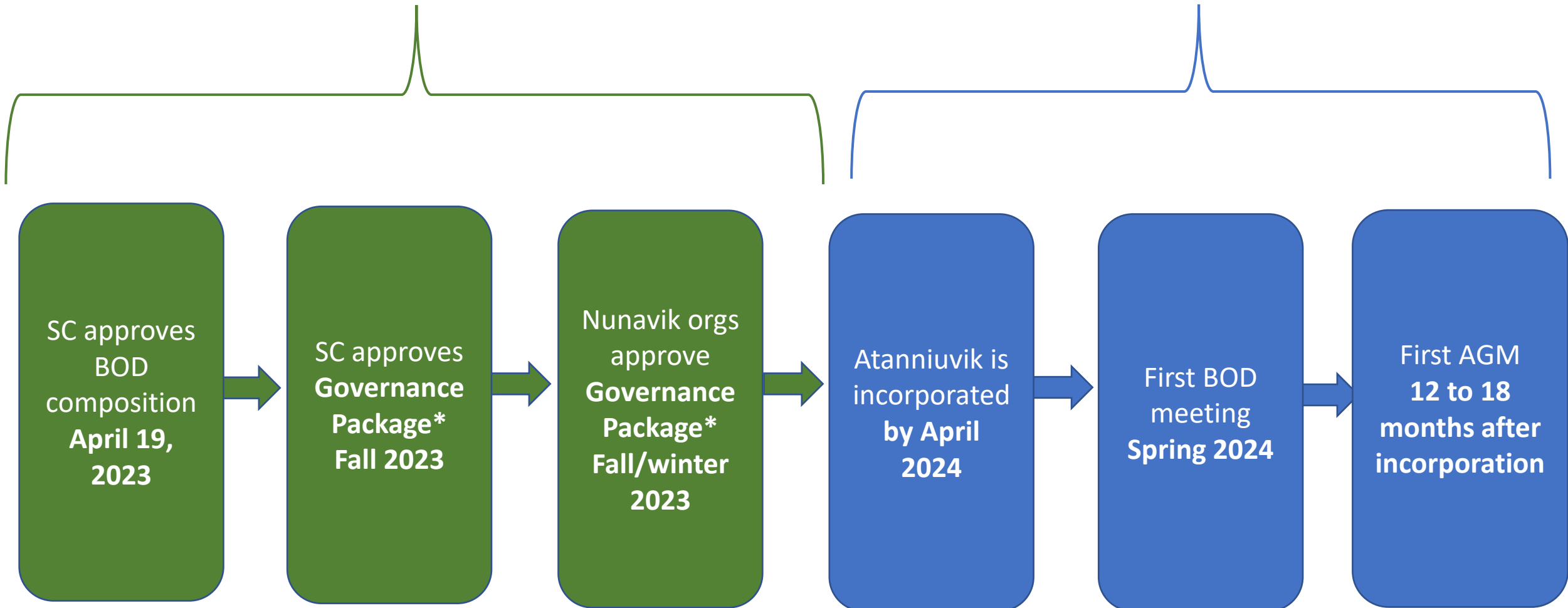


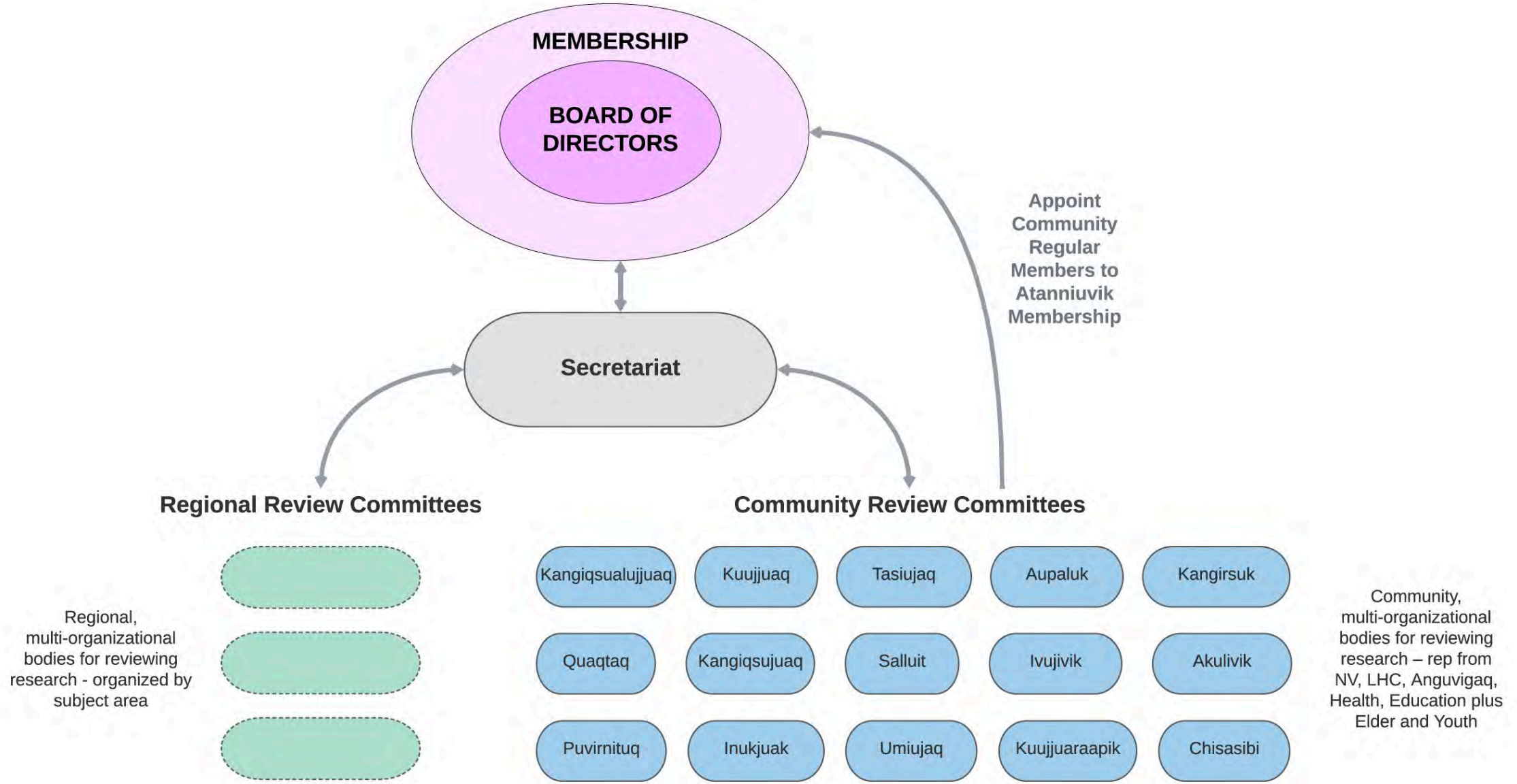


# Incorporation Timeline

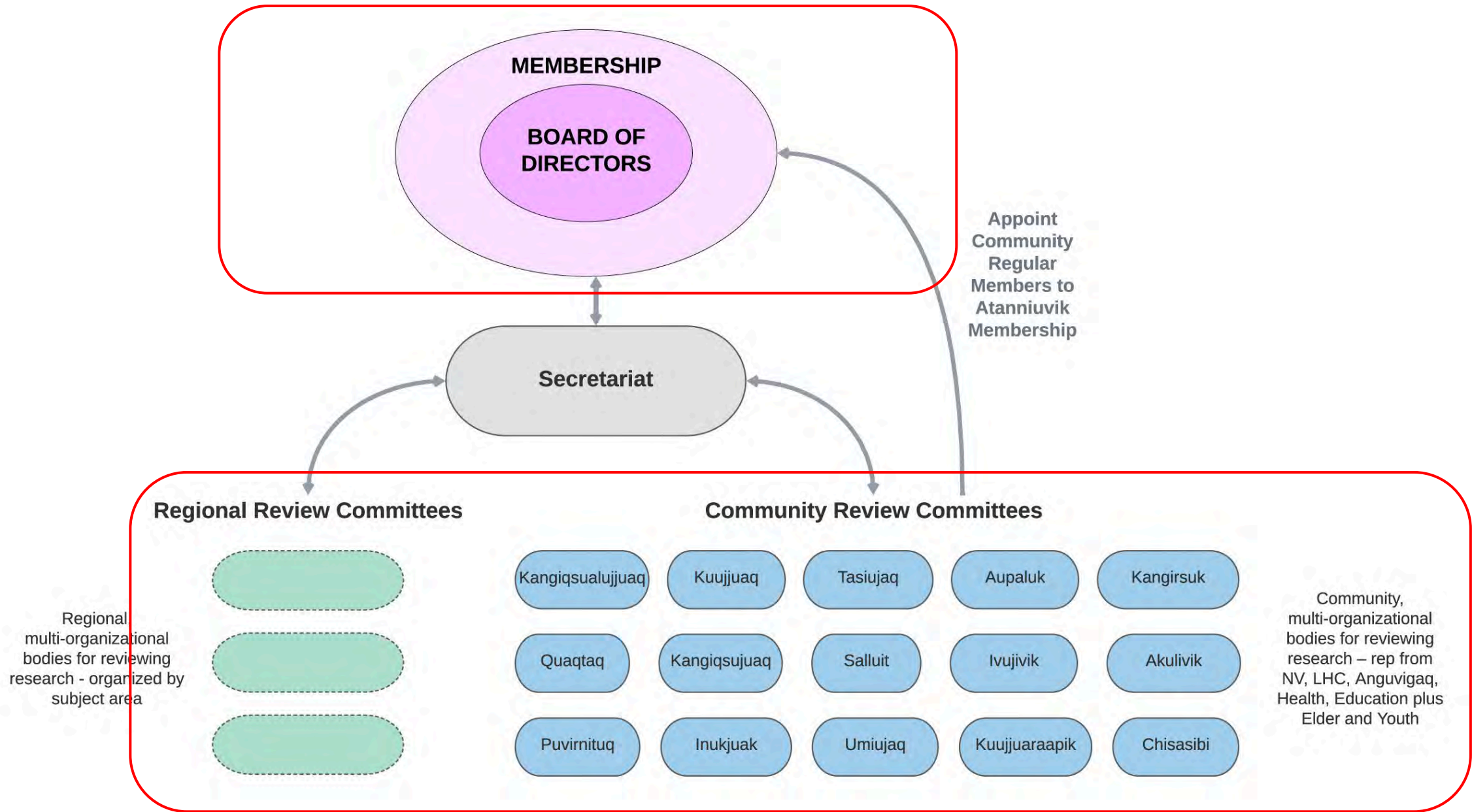
**SC has authority over Atanniuvik**

**BOD has authority over Atanniuvik**



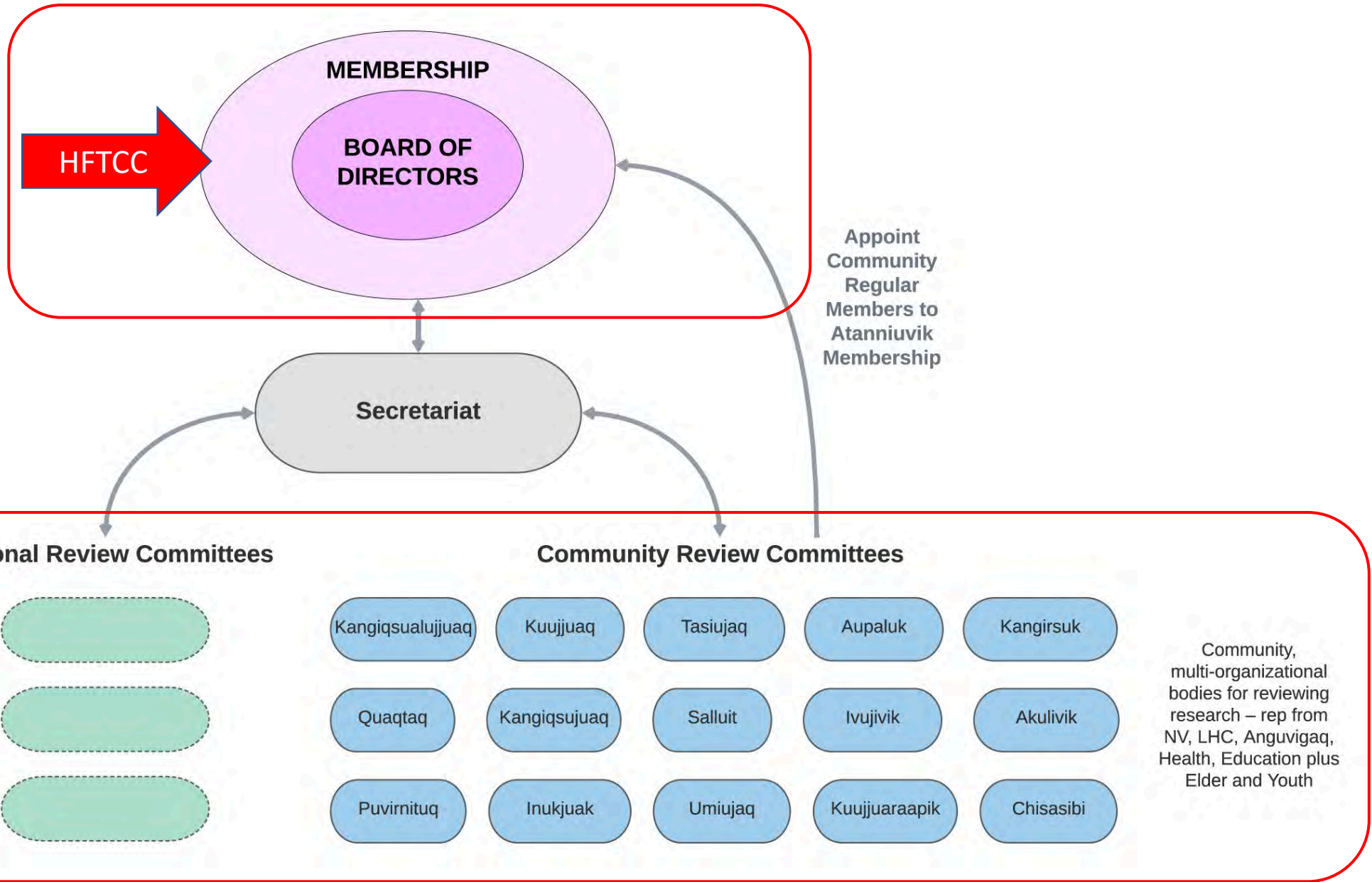


# Oversight of the organization



# Review of research projects

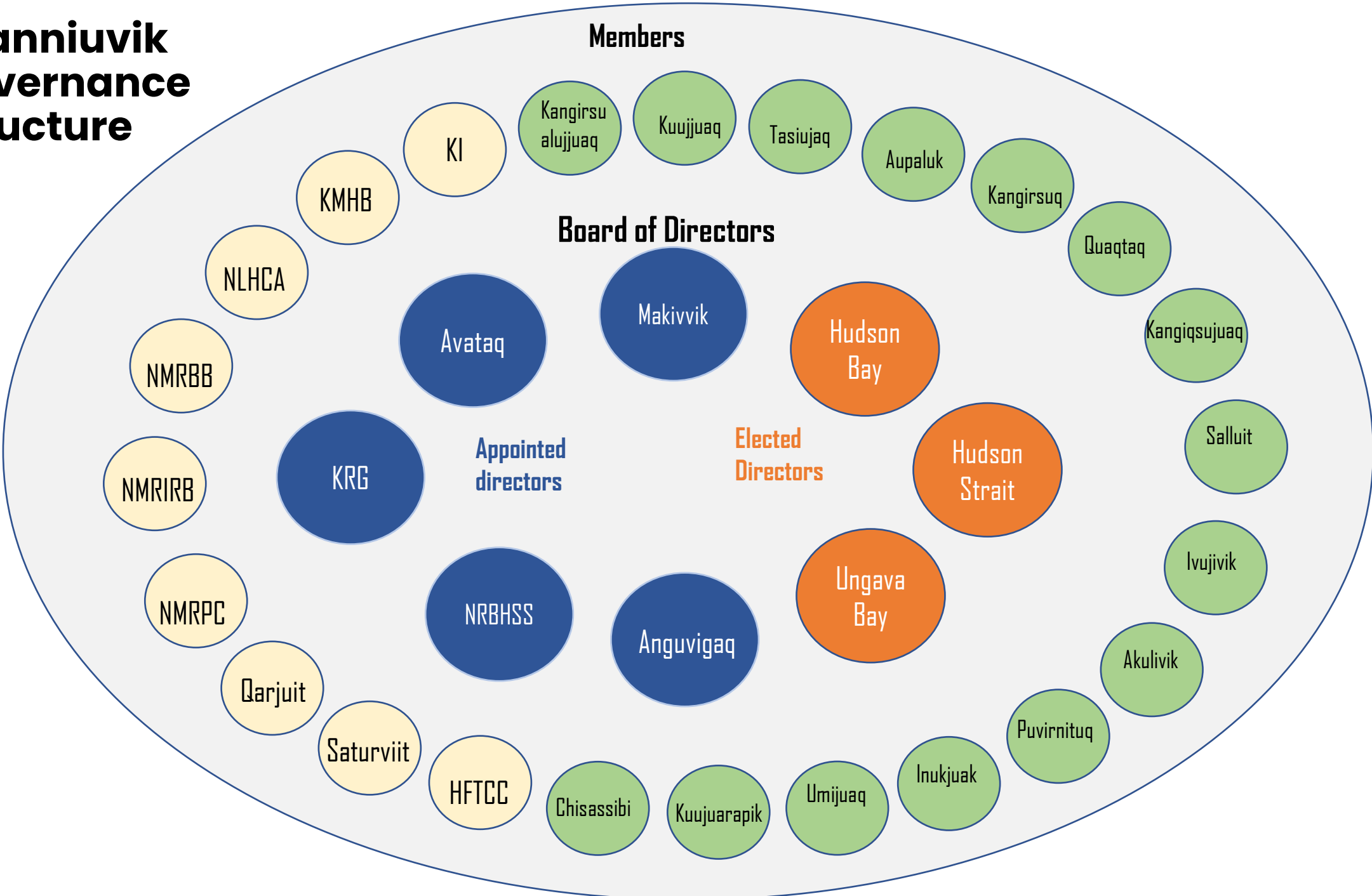
# Oversight of the organization



# Review of research projects



# Atanniuvik governance structure



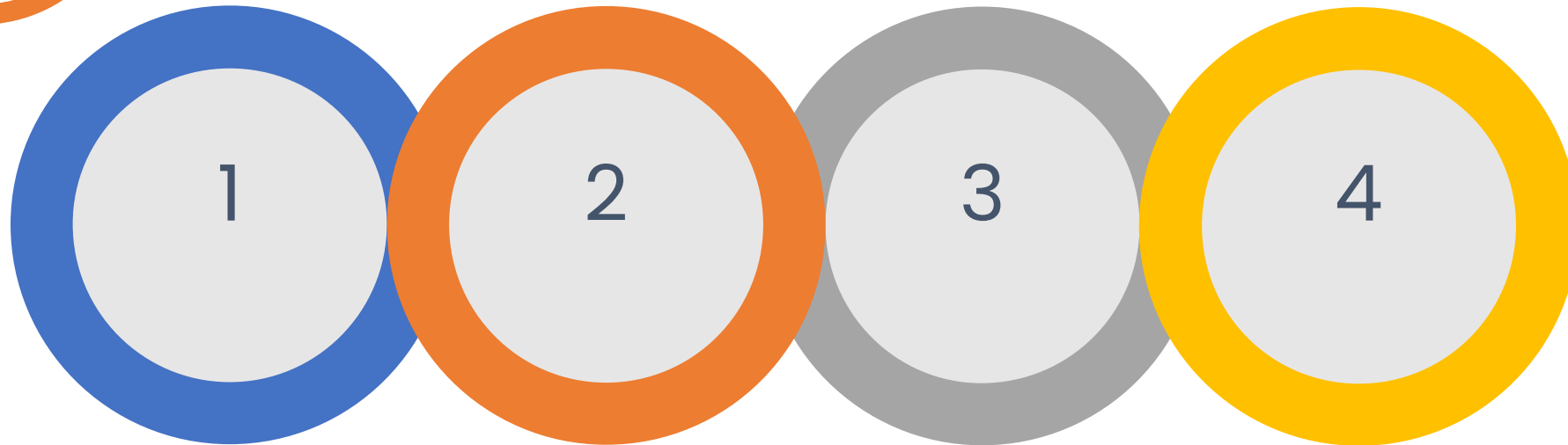


# Membership Policy

## Role and composition



Membership holds the Board accountable



1  
Authority and unity of Nunavik

2  
Size needs to be manageable / realistic

3  
Broad inclusion of regional organizations involved in research

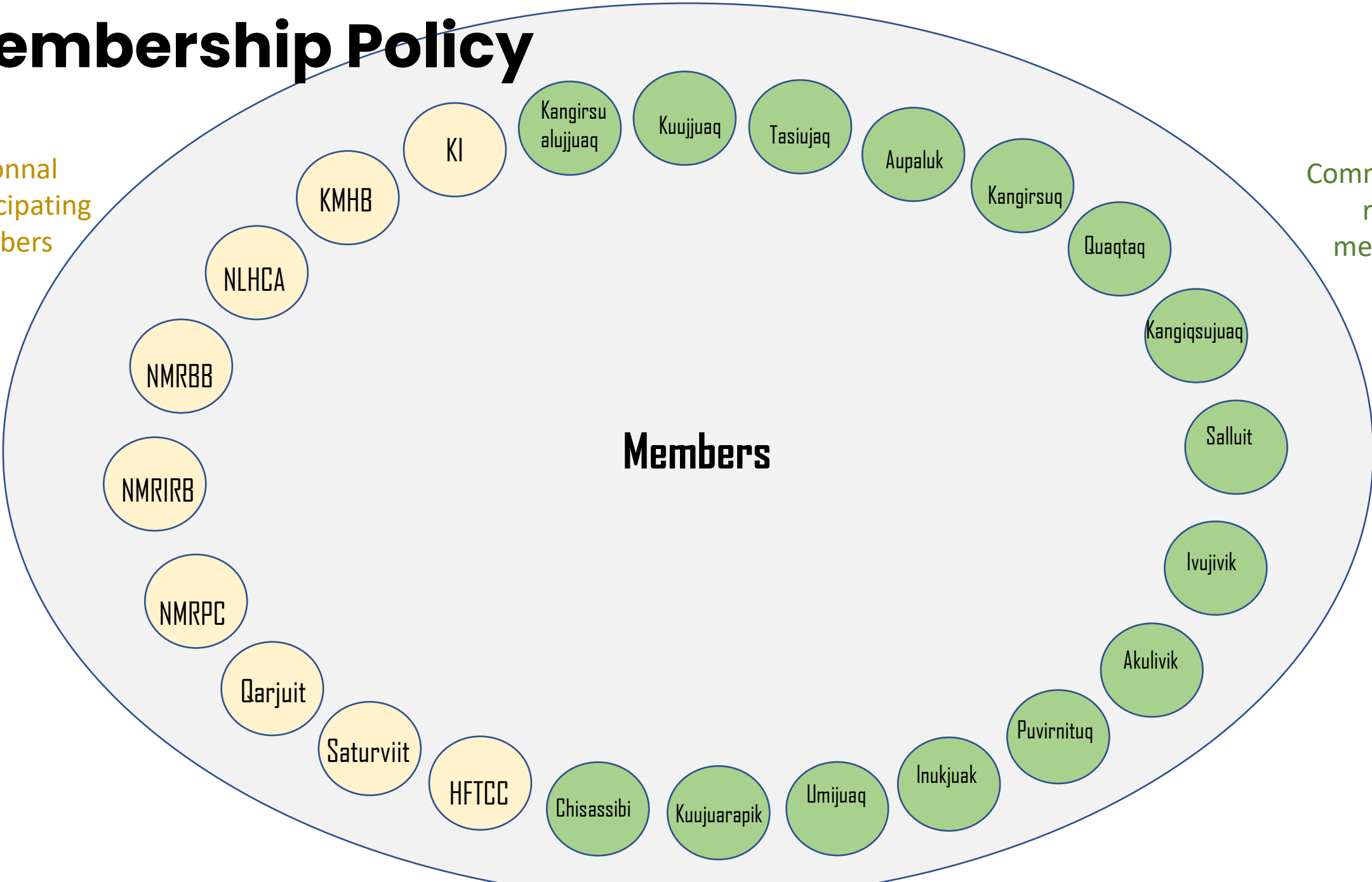
4  
Should include all communities



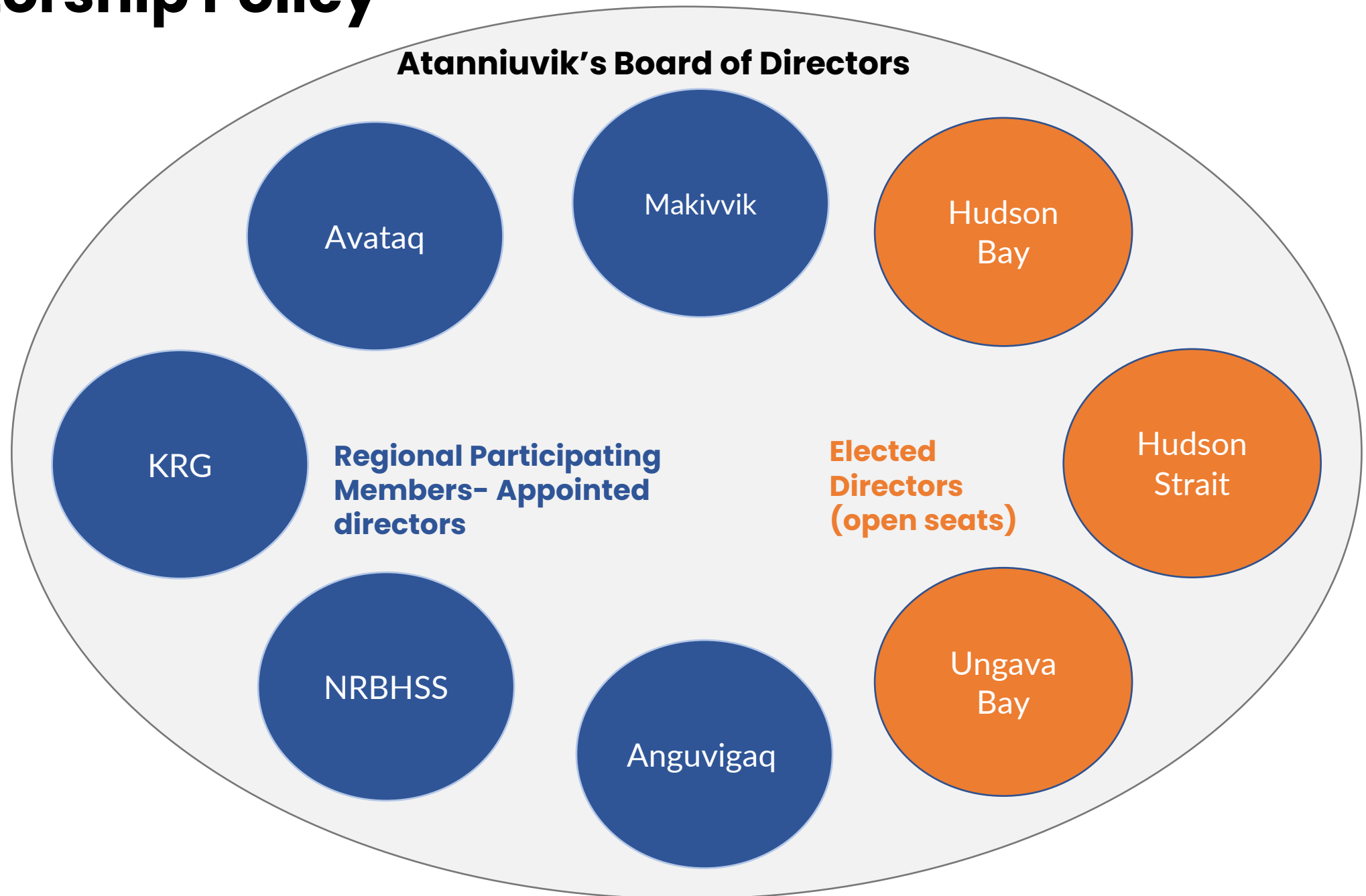
# Membership Policy

Regionnal participating members

Community regular members



# Directorship Policy







# Atanniuvik's By-laws

Define legal elements



Keep things running smoothly



Structure the organization



The legal backbone of the organization



◁C<sup>o</sup>σ▷Δ<sup>b</sup>  
Atanniuvik

---

**Thank you for you  
attention**

**... Any questions?**